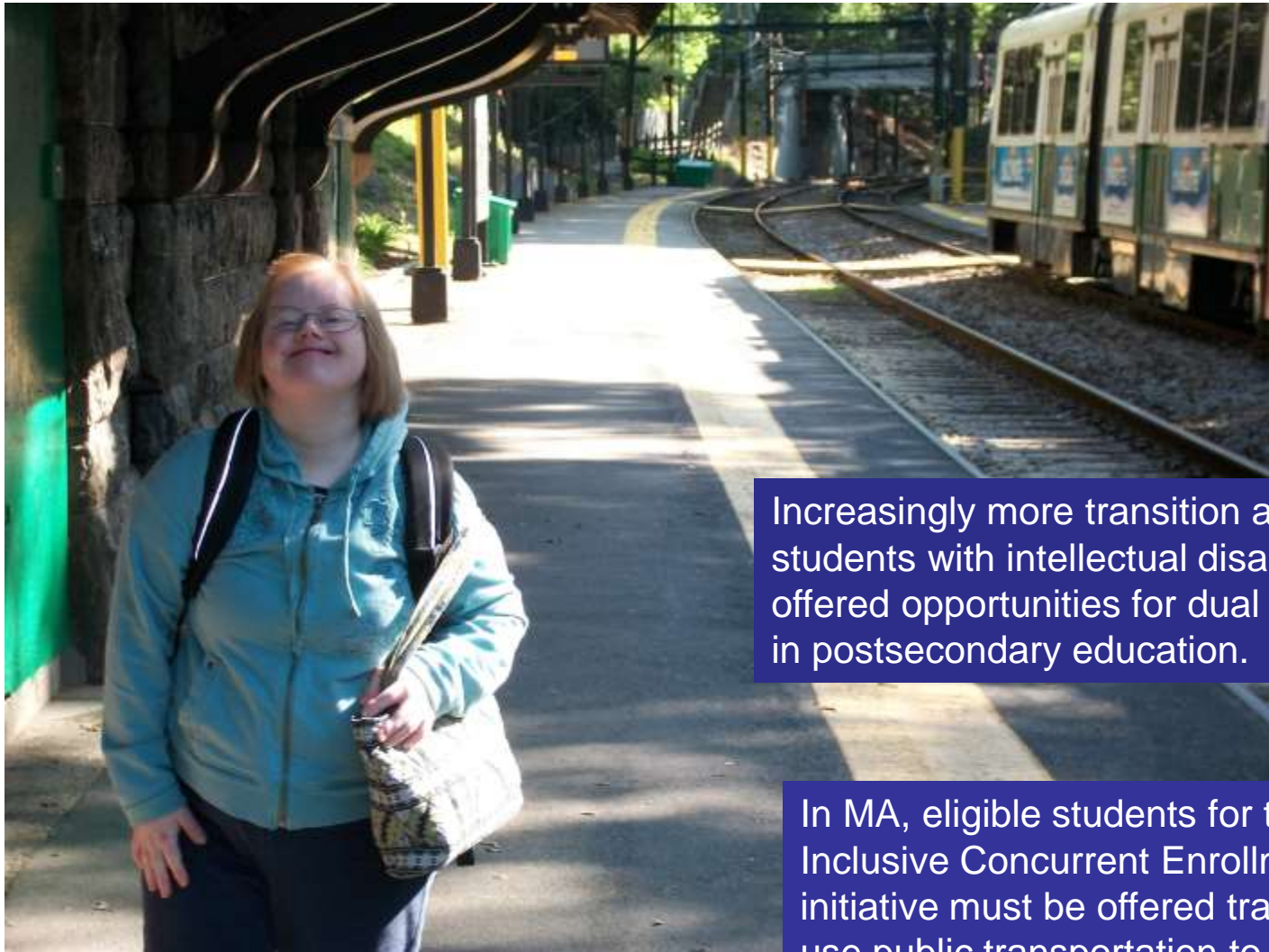


Importance of Including Transportation in Transition Planning

Maria Paiewonsky
Transition Specialist
Institute for Community Inclusion
University of MA Boston





Increasingly more transition age students with intellectual disabilities are offered opportunities for dual enrollment in postsecondary education.

In MA, eligible students for the Inclusive Concurrent Enrollment initiative must be offered training to use public transportation to college and work.

When transportation policies are aligned with other transition activities, students have more opportunities to pursue postsecondary goals.



When transportation policies do not align with transition activities, student preparation is greatly impacted.

Early and ongoing transportation and mobility training broaden students' opportunities for employment.



Thank you

